



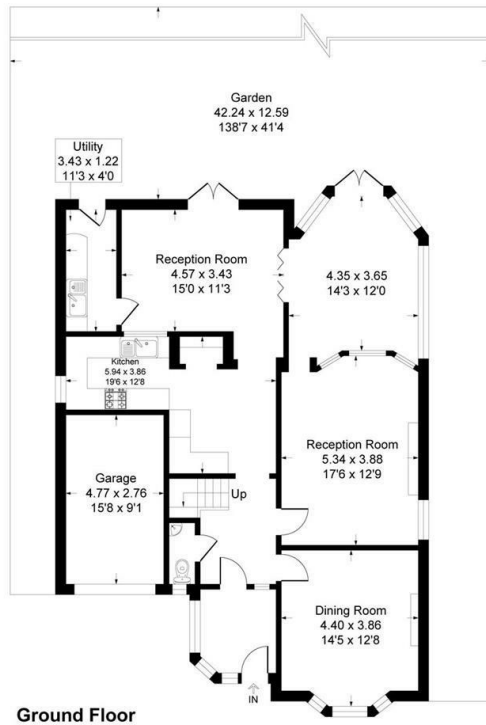
ASKING PRICE

**£950,000**

**Poverest Road**

Orpington, BR5 1GY

EPC RATING: E COUNCIL TAX BAND: G



**Poverest Road, BR5**

Approximate Gross Internal Area  
 181.2 sq m / 1951 sq ft  
 Garage = 13.1 sq m / 142 sq ft  
 Total = 194.3 sq m / 2093 sq ft



This plan is for layout guidance only. Not drawn to scale unless stated. Windows and door openings are approximate. Whilst every care is taken in the preparation of this plan, please check all dimensions, shapes and compass bearings before making any decisions reliant upon them.  
 Produced By Planpix



Energy Efficiency Rating		Current	Potential
Very energy efficient - lower running costs			
(92 plus)	A		
(81-91)	B		
(69-80)	C		
(55-68)	D		
(39-54)	E	51	
(21-38)	F		
(1-20)	G		
Not energy efficient - higher running costs			
England & Wales			78
			EU Directive 2002/91/EC

Agents Note: Whilst every care has been taken to prepare these particulars, they are for guidance purposes only. All measurements are approximate and are for general guidance purposes only and whilst every care has been taken to ensure their accuracy, they should not be relied upon and potential buyers/tenants are advised to recheck the measurements



**OFFICE ADDRESS**

1 Chatsworth Parade  
 Kent  
 BR5 1EF

**OFFICE DETAILS**

01689 806 770  
 infopw@sinclairhammelton.co.uk